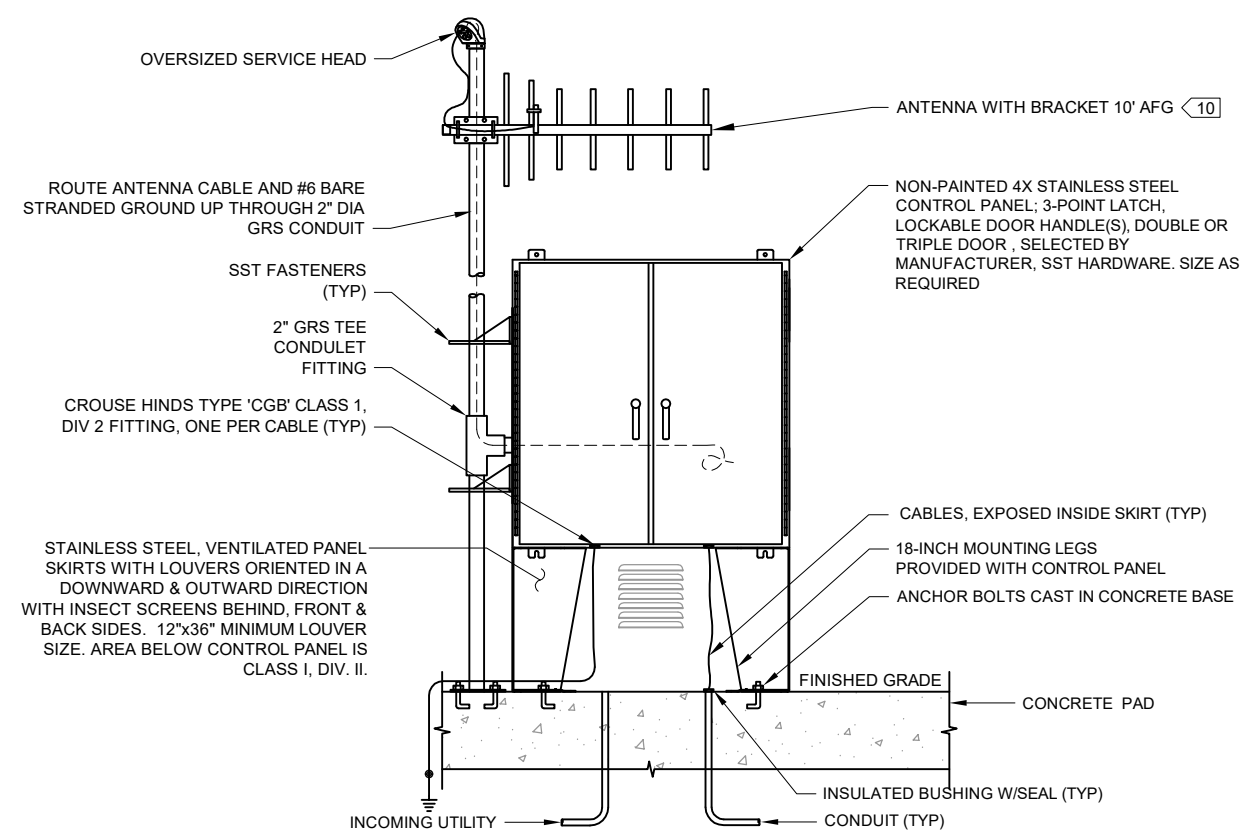
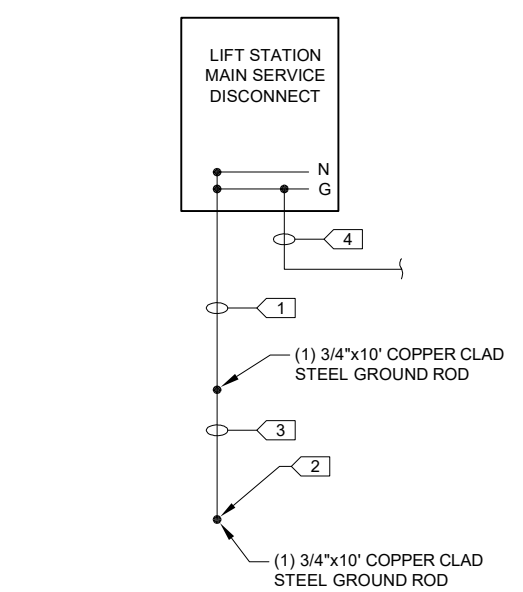


- KEY NOTES:**
- SIZE MAIN GROUNDING CONDUCTOR PER NEC OR 12.5% OF TOTAL CROSS SECTIONAL AREA OF MAIN SERVICE CONDUCTORS PER PHASE.
 - EXOTHERMIC WELD ALL CONNECTIONS OF CONDUCTORS TO GROUND RODS.
 - GROUND RODS SHALL BE SPACED A MINIMUM OF 6 FEET APART. CONDUCTOR CONNECTING THE GROUND RODS SHALL BE A MINIMUM OF #2/0 AWG BARE CU.
 - BONDING CONDUCTOR PER NEC FOR CONNECTION TO CONTROL PANEL, EXPOSED ABOVE GROUND PIPE/VENT AND ALL OTHER AREAS REQUIRED TO BE BONDED TO GROUNDING.
 - CONTRACTOR SHALL CONTACT UTILITY AND PROVIDE ARC FLASH AND AVAILABLE FAULT CURRENT LABELING ON EQUIPMENT PER NEC 110.16 AND 110.24.
 - UTILITY PROVIDED PRIMARY SERVICE AND TRANSFORMERS. ELECTRICAL CONTRACTOR SHALL COORDINATE UTILITY WORK.
 - PROVIDE SECONDARY CIRCUITRY AND CONNECTIONS.
 - PROVIDE MG&E APPROVED 200A SINGLE POSITION METER SOCKET AND INSTALL UTILITY FURNISHED METER.
 - CONNECT GENERATOR HEATER, CHARGER AND DEVICES RECOMMENDED BY GENERATOR MFR.
 - PROVIDE ANTENNA WITH CORD GRIP, CONDUIT, CABLE AND MOUNTING BRACKETS AND CONNECT TO RADIO. VERIFY HEIGHT REQUIREMENTS WITH OWNER. MMSD TO PROVIDE ANTENNA CABLE AND RADIO. CONTRACTOR TO PROVIDE MAST AND ANY ASSOCIATED HARDWARE OR BRACKETS. COORDINATE ANTENNA/MAST INSTALLATION WITH MMSD.
 - VERIFY INSTALLED MOTOR FULL LOAD AMPS (FLA) PRIOR TO ORDERING RVSS. PROVIDE CIRCUIT BREAKER AND RVSS SIZED FOR INSTALLED MOTOR. PROVIDE ETHERNET CONNECTION AND HARDWIRE IO CONNECTION BETWEEN EACH RVSS AND SUPERVISORY CONTROL PANEL.
 - MANUFACTURER (MFR) SUPPLIED CABLE, TYP.
 - PROVIDE 3-PHASE 208V POWER MONITOR IN SEPARATE ENCLOSURE. PROVIDE CIRCUIT PROTECTION FOR POWER MONITOR PER MANUFACTURER'S RECOMMENDATIONS.
 - PROVIDE UPS ON SHELF LOCATED WITHIN ENCLOSURE. UPS TO BE POWERED BY SINGLE OUTLET LOCATED ADJACENT TO UPS LOCATION POWERED BY THROUGH CONTROL SECTION. OUTLET SHOULD BE LABELED "UPS ONLY".
 - PROVIDE PANEL HEATER WITH BUILT IN THERMOSTAT.
 - PROVIDE LED ENCLOSURE LIGHT, TRIGGERED BY A DOOR SENSOR. PROVIDE (1) 18" LIGHT PER EVERY 3FT OF PANEL WIDTH.
 - PROVIDE COOLING FAN, THERMOSTATICALLY CONTROLLED. FAN SHALL PULL FILTERED AIR INTO PANEL. PROVIDE FILTERED LOUVERS AND COVERS FOR LOUVERS DURING WINTER MONTHS. PROVIDE SPARE FILTERS.
 - DEDUCT BID ALTERNATE: DELETE GENERATOR AND ATS. PROVIDE MANUAL TRANSFER SWITCH AND 200A RECEPTACLE FOR PORTABLE GENERATOR, 120/208V, 3-PHASE, 4-WIRE.
 - PROVIDE EMT CONDUIT FOR ALL WIRING BETWEEN SUBPANELS IN THE MAIN ENCLOSURE.



CONTROL PANEL ELEVATION
NO SCALE

CONTROL PANEL ONE-LINE DIAGRAM
NO SCALE



BONDING & GROUNDING DETAIL
SCALE: NONE

10 NORTH BRIDGE STREET
CHIPPewa FALLS, WI 54729
PHONE: 715.720.6000
FAX: 414.490.2100
WWW.SEHINC.COM

SEH

TRUAX LIFT STATION

MADISON, WISCONSIN

ADDED NOTE 19, 4/17/2023
REV(S)IONS

FILE NO. MADIS 18311
CLIENT PROJECT NO.
PROJECT STATUS
ISSUE DATE CW
DESIGNED BY JFB
DRAWN BY

Short Elliott Hendrickson, Inc. © (SEH)

TRUAX LIFT STATION
ELECTRICAL - ONE-LINE
DIAGRAM AND DETAIL

SHEET
10E2